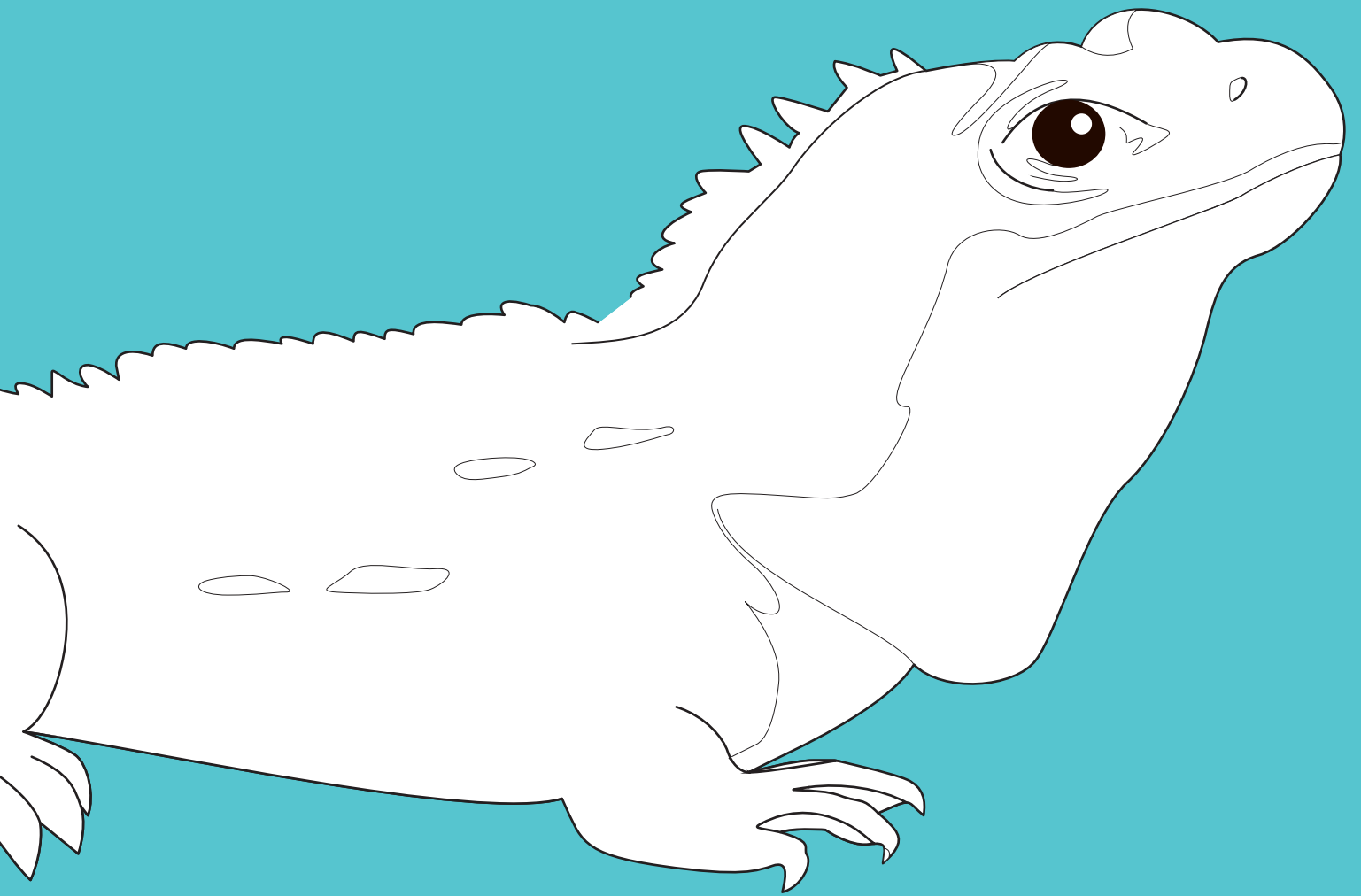


# Auckland Zoo ▶ Education Pack

## Primary



**Theme: New Zealand  
lizard species**

# Zoo Lesson plan

**Theme:** Primary (ages 5-11) **NEW ZEALAND SPECIES**

**What will I learn:** How to support and encourage the unique endemic species in New Zealand

## Inspire

Browse this Auckland Zoo ZooTales [New Zealand Species playlist](#) and find out more about our unique animals. Some of our favourites are [New Zealand Geckos](#) and [Truly Unique Tuatara](#).

Read about **whitebait in this informative comic** (resource attached). What are some of the things we can do to protect these vulnerable species?

## Explore

**Learn some new vocabulary** related to New Zealand Species. Which words are new for you? Create a quiz or some flash cards and get your family to practice these words too (resource attached).

**Explore your garden!** Draw or make a tally of the birds, lizards, bugs and other creatures you come across. You could use this **scavenger hunt** to help (resource attached). Write a little summary of what you noticed to share with family and friends online.

## Act

**Spread the Word!** You could create a little video about your favourite NZ Species or take a picture of your conservation project (e.g. lizard home) to inspire others! Share with your family and friends and with us!

## Create

**Create a tuatara in its habitat** using natural resources with our **Decorate a Tuatara template** (resource attached).

Feel like an expert? Try drawing your own using our **How to draw a tuatara guide** (resource attached).

Here are some things you can create to support our native species!

**Make a tracking tunnel** – find out which animals are in your neighbourhood. Do you have any pals or pests? (resource attached).

**Make a lizard home** – [Watch our video](#), and read some of our tips and tricks (resource attached).

**Make a nectar feeder** – to invite more birds into your garden (resource attached).

## Reflect

Take a **Mindful moment with Cathryn – Papatuānuku**

Check out this [video from Hohepa](#) – reflect on this idea of Kaitiakitanga and how you can be kaitiaki of the NZ environment.

What is one endemic NZ species that you care about conserving for the future? Why is it important for us to help support the endemic species that are here in New Zealand? Share your thoughts.

**Curriculum links:**

Lessons include a range of aspects from the main strands of the NZ Curriculum - English, The arts, Health and physical education, Learning languages, Mathematics and statistics, Science, Social science and Technology.

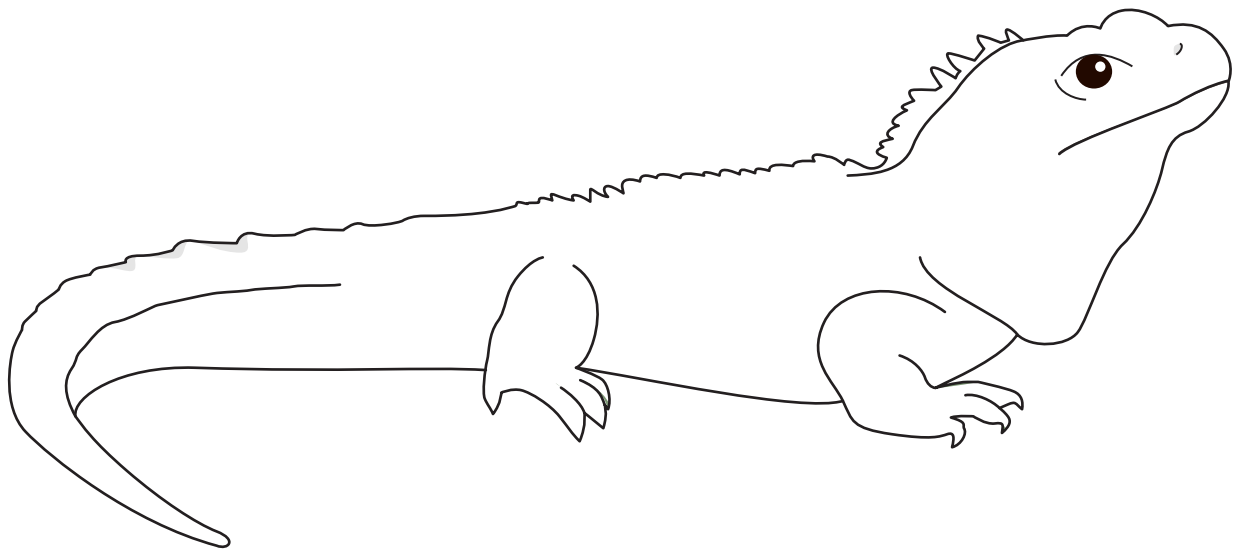
They also consider the Key Competencies - Thinking, Using language, Symbols and text, Managing self, Relating to others, Participating and communicating.

# Decorate your tuatara

**Tuatara are a type of reptile which means they are covered in scales!**

Use this template and find some bark to take a rubbing and give your tuatara some scaly skin!

Decorate its habitat by drawing in the things it might need in the wild or using things you find in your garden.



# ◀ Lizard homes ▶

## Your challenge:

Can you create a lizard home in your garden?



**Copper skink**

*Oligosoma aeneum*



**Raukawa Gecko**

*Woodworthia maculata* also known as  
*Common Gecko*

## Did you know?

New Zealand has over 100 species of native lizards, including geckos and skinks!

## Key Steps:

1. Find a warm, sunny, dry spot with some bushes or long grass for hiding
2. Gather up some old branches, corrugated tiles, rocks, dead logs or big pieces of bark
3. Assemble these materials by stacking them loosely around and on top of each other. Make sure there are lots of gaps and crevices for lizards to hide in or find insects
4. Put out a little dish of water, especially in the summer
5. Enjoy seeing lizards come and use your garden lizard home! Remember to keep watch from a distance, and to keep their area safe from pets or other predators

Check out how to ['Build your own lizard home with Lizzy!'](#) and see how easy it is to create a lizard home in your garden!

# ◀ New Zealand Species ▶

## Essential words

**Endemic** Unique plants and animals found only in one place

**Introduced Species** Non-endemic plants and animals brought to a new habitat by people either accidentally or on purpose. Many can cause problems with endemic species and become invasive

**Endangered Species** When a plant or animal is in danger of disappearing forever

**Adaptation** A body part, feature, or behaviour that helps an animal or plant succeed in its environment

**Habitat** The place where animals and plants live and connect with each other

## Extras for experts

**Nocturnal** Animals who are most active during the night time

**Diurnal** Animals who are most active during daylight

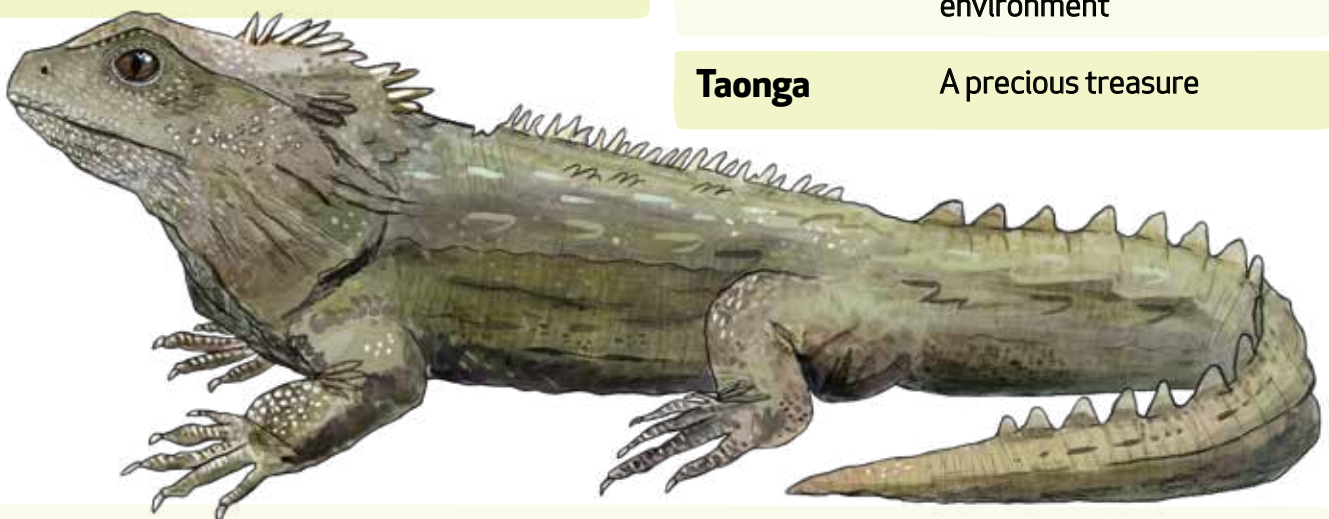
**Camouflage** A way of hiding something by colouring or covering it to look like its surroundings. Some living things also change their behaviour too

**Predator** An animal that lives by hunting and eating other animals

**Ecosystem** All living and non-living in an area connecting and interacting with each other

**Kaitiakitanga** Guardianship and protection of the environment

**Taonga** A precious treasure



## Vestigial

A tuatara has a vestigial third eye on the top of their head, meaning that it doesn't use it for sign anymore.

What might our animals look like in a few million years? How might evolution change their bodies to be more suitable in a different landscape?

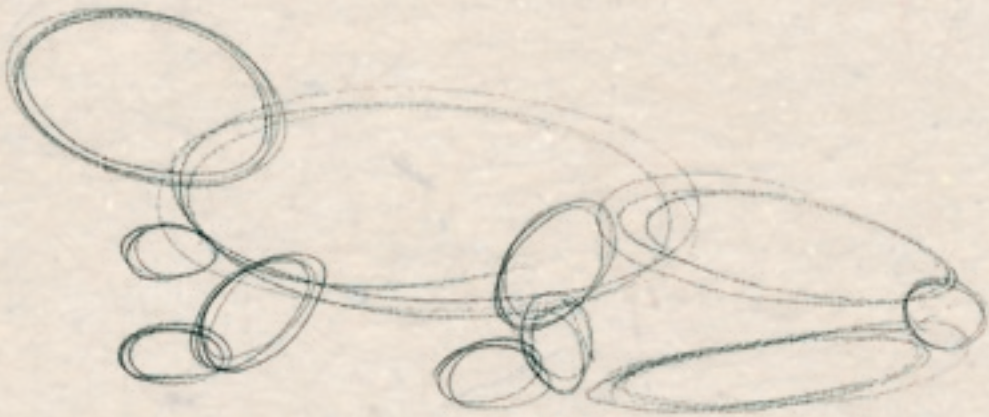
# HOW TO DRAW

# a Tuatara



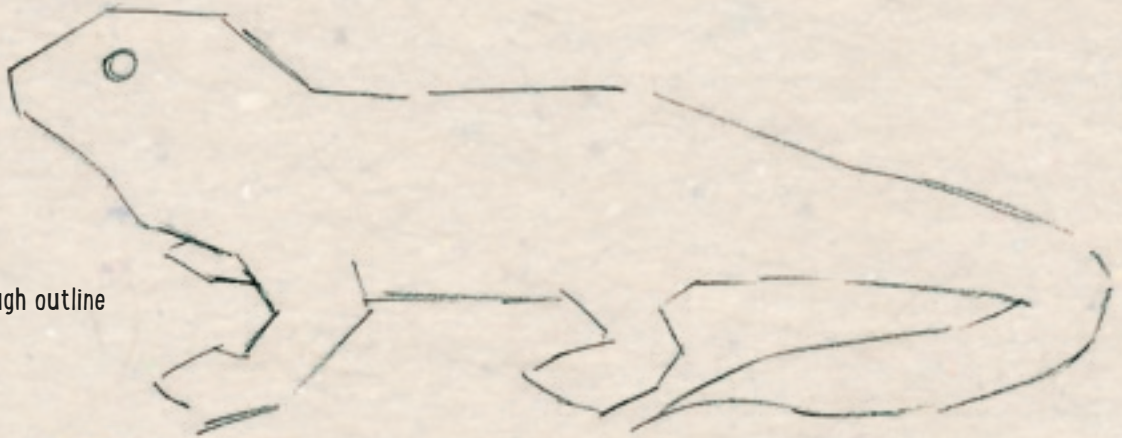
1

Use a pencil to sketch out simple shapes



2

Create a rough outline



3

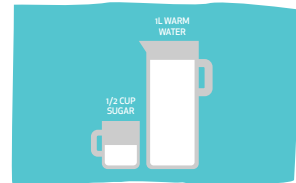
Add colour and detail



# Make a nectar feeder

Attract native birds like tui to your garden by creating your own nectar feeder.

1. Sit a 1L plastic milk container in a shallow dish or saucer.
2. Make 2-3 very small holes  $\frac{1}{2}$  a centimetre from the bottom of the bottle – this will allow sugar solution to come out of the bottle up to the height of the holes.
3. To make sugar solution, dissolve  $\frac{1}{2}$  a cup of sugar in 1L of warm water.
4. Fill the bottle of your automatic feeder and screw the lid back on tightly.
5. Place the feeder outside in a spot cats can't reach.

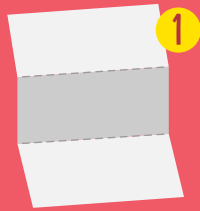


# Make a tracking tunnel

Find out if pests or pals live in your garden

## you will need:

- A3 size white card
- plastic lid
- stapler
- 1 tissue
- 1 teaspoon of food colouring, mixed with 2 teaspoons water
- 1 teaspoon peanut butter



1

fold card to width of plastic lid



2

fold up sides and staple the top



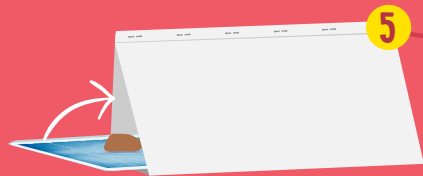
3

fold tissue to fit in plastic lid then pour food colouring/water mix onto tissue until it's soggy



4

put peanut butter in middle of tissue



5

put your tracking tunnel in a sheltered spot in the garden and leave overnight

check your tunnel the next morning to find out if you have pests or pals

6



# Who left the tracks?



Pal

Gecko



Pest

Stoat



Pal

Wetupunga



Pest

Rat



Pal

Skink



Pest

Hedgehog

Auckland  
**ZOO**  
Wildlife conservation  
science at work

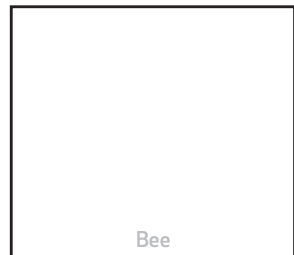
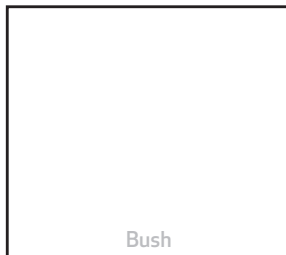
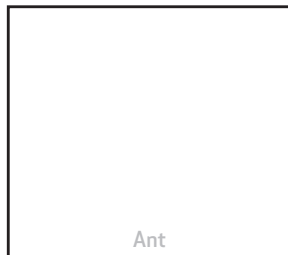
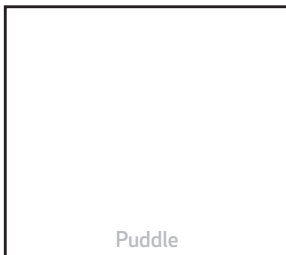
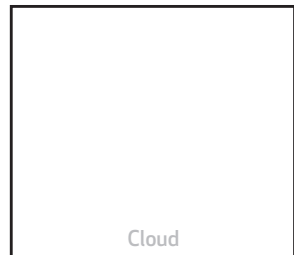
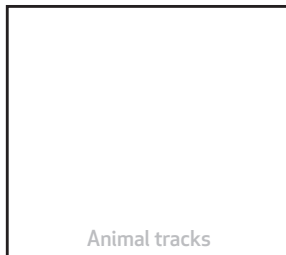
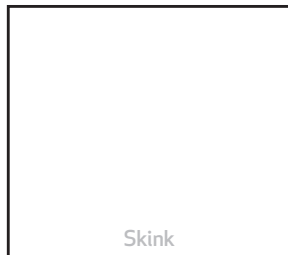
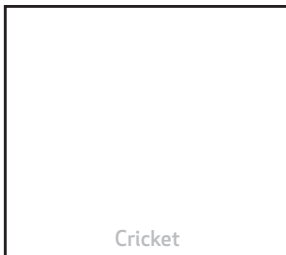
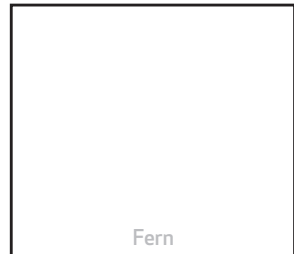
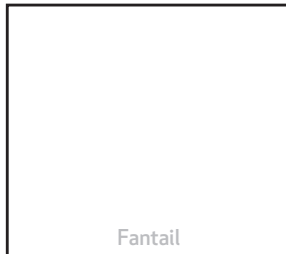
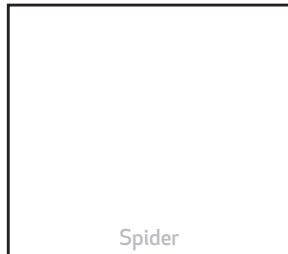
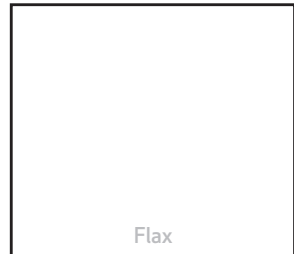
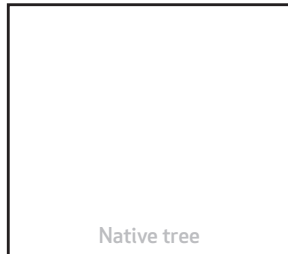
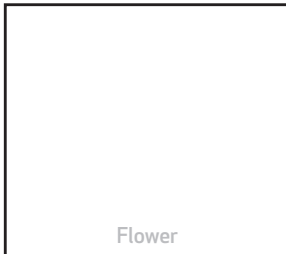
Auckland Zoo is working hard  
to make the Zoo **pest free**



All you need is:  
Paper, colouring pencils or pen  
and your backyard.

# Explore your backyard

Print out this scavenger hunt or if you don't have a printer you can draw your own! Find the listed items and draw them in the boxes below.



Share your art work! [Zoofriends@aucklandzoo.co.nz](mailto:Zoofriends@aucklandzoo.co.nz)